

# Product Range Overview: Larssen Hot Rolled Sheets

	Section modulus		Weight		Second moment of inertia	Back thickness	Web thickness	Wall height	Section width
	$W_y^{1)}$	$cm^3/m$	$kg/m^2$	$kg/m$	$I_y$	t	s	h	b
	Wall	Single pile	Wall	Single pile	Wall	mm	mm	mm	mm
<b>LARSEN sections</b>									
LARSEN 755	2000	580	127.5	95.6	45000	11.7	10.0	450	750
LARSEN 703	1210	414	96.4	67.5	24200	9.5	8.0	400	700
LARSEN 703 K	1300	426	103.0	72.1	25950	10.0	9.0	400	700
LARSEN 703 10/10 <sup>3)</sup>	1340	437	108.0	75.6	26800	10.0	10.0	400	700
LARSEN 704	1600	529	115.0	80.5	35200	10.2	9.5	440	700
LARSEN 600	510	130	94.0	56.4	3825	9.5	9.5	150	600
LARSEN 600 K	540	133	99.0	59.4	4050	10.0	10.0	150	600
LARSEN 601	745	251	78.0	46.8	11520	7.5	6.4	310	600
LARSEN 602	830	265	89.0	53.4	12870	8.2	8.0	310	600
LARSEN 603	1200	330	108.0	64.8	18600	9.7	8.2	310	600
LARSEN 603 K	1240	340	113.5	68.1	19220	10.0	9.0	310	600
LARSEN 603 10/10 <sup>3)</sup>	1260	350	116.0	69.6	19530	10.0	10.0	310	600
LARSEN 604 n	1600	415	123.0	73.8	30400	10.0	9.0	380	600
LARSEN 605	2020	520	139.2	83.5	42420	12.5	9.0	420	600
LARSEN 605 K	2030	537	144.5	86.7	42630	12.2	10.0	420	600
LARSEN 606 n	2500	605	157.0	94.2	54375	14.4	9.2	435	600
LARSEN 607 n	3200	649	190.0	114.0	72320	19.0	10.6	452	600
LARSEN 22 10/10 <sup>3)</sup>	1300	369	130.0	65.0	22100	10.0	10.0	340	500
LARSEN 23	2000	527	155.0	77.5	42000	11.5	10.0	420	500
LARSEN 24	2500	547	175.0	87.5	52500	15.6	10.0	420	500
LARSEN 24/12	2550	560	185.4	92.7	53610	15.6	12.0	420	500
LARSEN 25	3040	562	206.0	103.0	63840	20.0	11.5	420	500
LARSEN 43	1660	483	166.0	83.0	34900	12.0	12.0	420	500

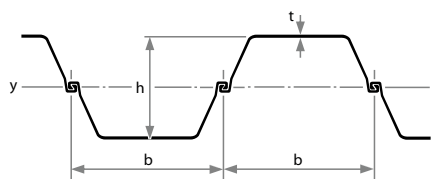
	Section modulus		Weight		Second moment of inertia	Back thickness	Wall height	Section width
	$W_y^{1)}$	$cm^3/m$	$kg/m^2$	$kg/m$	$I_y$	t	h	b
	Wall	Single pile	Wall	Single pile	Wall	mm	mm	mm
<b>STU range</b>								
STU 1000	1,000	203	103	61.8	13,000	10.3	260	600
STU 1800	1,800	376	136	81.6	32,400	13.4	360	600
STU 2700	2,700	539	177	106	56,700	18.0	420	600

<sup>1)</sup> The section modulus values may only be used in static computations if at least every second interlock in the wall is crimped to adsorb shear forces.

<sup>2)</sup> Wall assembly fabricated from LARSEN 43 sections. Where quad pile assemblies are supplied, allowance must be made for the weight of the weld seams and reinforcements.

<sup>3)</sup> Rolling/delivery on request only.

<sup>4)</sup> With the use of quadruple piles  
b = 1416 mm



Lengths from 30 m to 36 m on request.

The basis for billing is the weight of the single pile (kg/m).