

## Overview: Fitting HSP profiles with STUs

Following is a diagram / guide only. The fitting is based on CAD drawings and there might be some variances.

For any questions, please contact BY on 02 94091 7777.

	STU1000	STU1800	STU2700
L601		x	x
L602		x	x
L603	x	x	
L604	x	x	
L605	x	x	
L606n	x		
L628		x	
L607n	x		
L703	x	x	
L704/L716			
L720		x	
L22	x		
L23 - 25	x	x	
L43/430	x	x	
H1807			
H2607			
STU1000			x
STU1800			
STU2700	x		

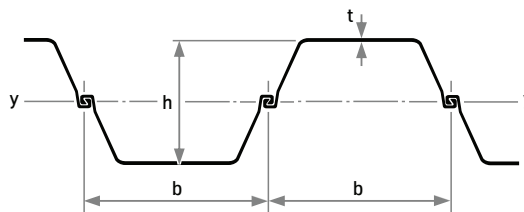
connectable   
 x    not connectable

<sup>1)</sup> The section modulus values may only be used in static computations if at least every second interlock in the wall is crimped to adsorb shear forces.

<sup>2)</sup> Wall assembly fabricated from LARSEN 43 sections. Where quad pile assemblies are supplied, allowance must be made for the weight of the weld seams and reinforcements.

<sup>3)</sup> Rolling/delivery on request only.

<sup>4)</sup> With the use of quadruple piles  
b = 1416 mm



Lengths from 30 m to 36 m on request.

The basis for billing is the weight of the single pile (kg/m).