

Trench sheets and light weight sections.



OK

KD VI/6

KD VI/8

KL 3/4

KL 3/5

KL 3/6

KL 3/7

KL 3/8

40

145

UK



Trench sheets and light weight sections. Safe. Efficient. Reliable.

32

ThyssenKrupp GfT Bautechnik supplies a competitive range of trench sheets and light weight sections from its own in-house production.

As a leading service provider to the construction industry we ensure fast, on-time delivery of cost-effective products designed for smooth installation.

60



Trench sheeting sections

Trench sheeting sections are used to reliably shore trenches, shafts and excavations. They are used when the water tightness of an interlocked section is not necessary.

To facilitate repeated driving, the sections display high shape stability. Their special shape makes them easy to install and stack. The sections are made in our cold rolling mill and are stocked in lengths up to 8 m. Exceptional lengths can be produced on request.

Lightweight sections

Lightweight sections are mainly used for trench shoring in inner-city applications and for dike repair. The interlock joint on the lightweight section serves as a reliable hook. The sections are made in lengths of up to 12 m.

For structures with higher sealing requirements we supply light weight sections with interlock sealing, consisting of a permanently plastic bitumen compound. Light weight sections can also be fitted with System HOESCH interlock seals. All sections are subject to DIN material inspections and quality controls to guarantee safety, reliability and optimum driving properties.



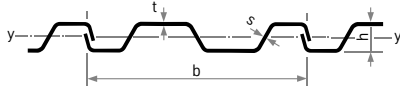
Steel grade for trench sheets and light weight sections according to DIN EN 10249-1

Steel grade	Tensile strength N/mm ²	Minimum yield point N/mm ²	Minimum elongation %
S 275 JR	410	275	22

Technical Details.

Trench sheeting sections

	Section modulus		Weight		Second moment of inertia	Section width	Wall height	Back thickness	Web thickness
	W_y	cm^3/m	kg/m^2	kg/m					
	Wall	Wall	Section	Wall	mm	mm	mm	mm	
KD VI/6	182	62.5	37.5	726	600	78		6.0	
KD VI/8	242	83.3	50.0	968	600	80		8.0	



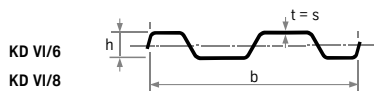
KD VI/6 no section that is available ex stock.

Available lengths: up to 12 m (from 12 m to 14 m on request)
Warehouse lengths from 3 m to 8 m

The basis for billing is the weight of the single pile (kg/m).

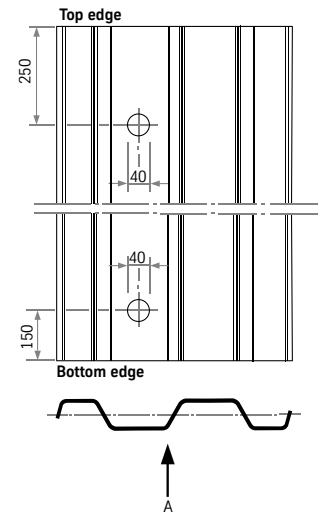
Available trench sheeting

E



Trench sheeting is only supplied in single piles.

Handling holes in trench sheeting sections

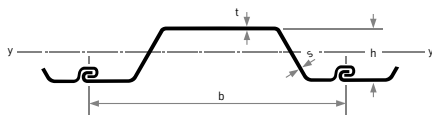


Trench sheeting is supplied with handling holes.

The holes are applied at both ends, as shown in the drawing.

Lightweight sections

	Section modulus		Weight		Second moment of inertia	Section width	Wall height	Back thickness	Web thickness
	W_y	cm^3/m	kg/m^2	kg/m					
	Wall	Wall	Singel-pile	Wall	mm	mm	mm	mm	
KL 3/4*	276	45.2	31.6	2042	700	146		4.0	
KL 3/5	339	55.8	39.1	2502	700	147		5.0	
KL 3/6	410	66.0	46.2	3080	700	148		6.0	
KL 3/7*	460	78.0	54.6	3500	700	149		7.0	
KL 3/8	540	88.0	61.5	4050	700	150		8.0	

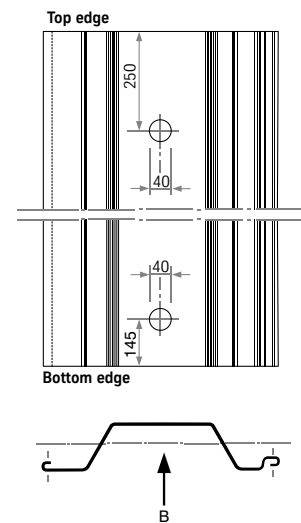


*No section that is available ex stock.

Available lengths: up to 12 m (from 12 m to 14 m on request)
Warehouse lengths from 3 m to 8 m

The basis for billing is the weight of the single pile (kg/m).

Handling holes in lightweight sections



b-position = Standard form
Handling hole = 250 mm from top edge
145 mm from bottom edge

a-position = Non-standard form
Handling hole = 145 mm from top edge
250 mm from bottom edge

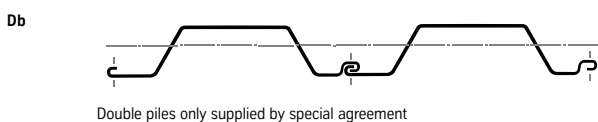
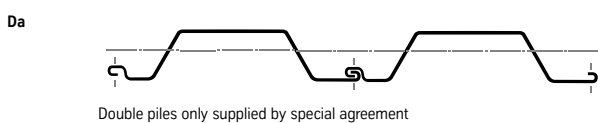
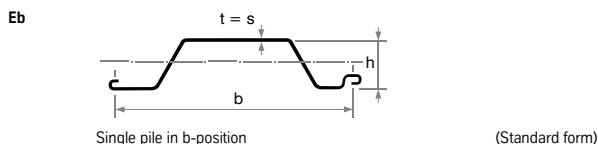
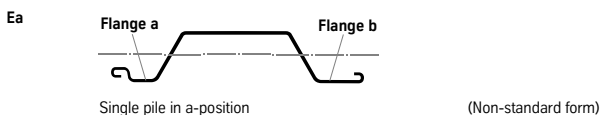
Lightweight sections are supplied with handling holes. The holes are applied at both ends, as shown in the drawing.

Double piles, which we only supply by special agreement, can be welded in the interlock on one side at the top and bottom.

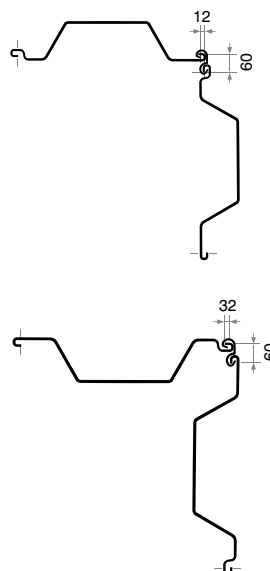
The weld seam length is as follows:
• 0.20 m for pile lengths up to 3.0 m
• 0.25 m for pile lengths of 3.0 to 6.0 m
• 0.35 m for pile lengths of 6.0 to 9.0 m

Note:
When lifting unwelded double or multiple piles on the site, each pile must be suspended from a lifting hook.

Available KL lightweight sections



Corner piles with Wall sections V 20



ThyssenKrupp GfT Bautechnik GmbH

P.O. Box 10 22 53, 45022 Essen, Germany
Altendorfer Strasse 120, 45143 Essen, Germany
Phone: +49 201 188-2313
Fax: +49 201 188-2333
bautechnik@thyssenkrupp.com
www.tkgftbautechnik.com

Export

Altendorfer Strasse 120, 45143 Essen, Germany
Phone: +49 201 188-3758
Fax: +49 201 188-3974
export-bautechnik@thyssenkrupp.com

Eastern Europe

Altendorfer Strasse 120, 45143 Essen, Germany
Phone: +49 201 188-3769
Fax: +49 201 188-3730
osteuropa-bautechnik@thyssenkrupp.com

Represented by:

Distributed in Australia
& New Zealand by

ThyssenKrupp Steelcom

A company of ThyssenKrupp Services

PO Box 840 North Sydney
NSW 2059 Australia
T: +61 2 9954 9166
Sales +61 2 4966 0688
F: +61 2 9955 4298
enquiries@steelcom.com.au
www.steelcom.com.au

PO Box 51254 Pakuranga
Auckland 2140 New Zealand
T: +64 9 576 3977

F: +64 9 576 3978
afenn@steelcomnz.co.nz
www.steelcomnz.co.nz



ThyssenKrupp

