

Section illustrations and data

LARSSEN 600 K

Section width per D = 1200 mm

	Unit	Per m wall	Single pile	Double pile	Triple pile	
			E	D	Dr	
Elastic section modulus ¹⁾	W_y	cm ³	540	123	627	733
	W_z	cm ³	–	1022	–	–
Plastic section modulus ¹⁾	W_y	cm ³	580	–	–	–
Weight		kg/m	99.0	59.4	118.8	178.2
Cross sectional area		cm ²	126.0	75.6	151.2	226.8
Circumference ²⁾		cm	225	156	291	426
Coating area ³⁾		m ² /m	2.25	1.44	2.79	4.14
Static moment	S_y	cm ³	290	–	–	–
Second moment of inertia	I_y	cm ⁴	4050	823	4700	6620
	I_z	cm ⁴	–	32500	–	–
Radius of gyration	i_y	cm	5.60	3.30	5.60	5.40

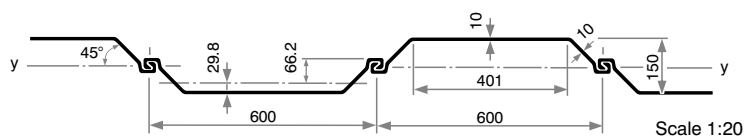
1) Section modulus referred:

E and Dr – the heavy axis of the respective element; D and per m wall – the wall axis y-y.

The section modulus of D, Dr u. per m wall requires locking of the factory-crimped interlocks to accommodate the shear forces.

2) Including the internal surface of free interlocks of single, double and triple piles.

3) Without interlock interior – two-side coating.



Classification according to ENV 1993-5

Steel grade					
S 240 GP	S 270 GP	S 320 GP	S 355 GP	S 390 GP	S 430 GP
3	3	4	4	4	4